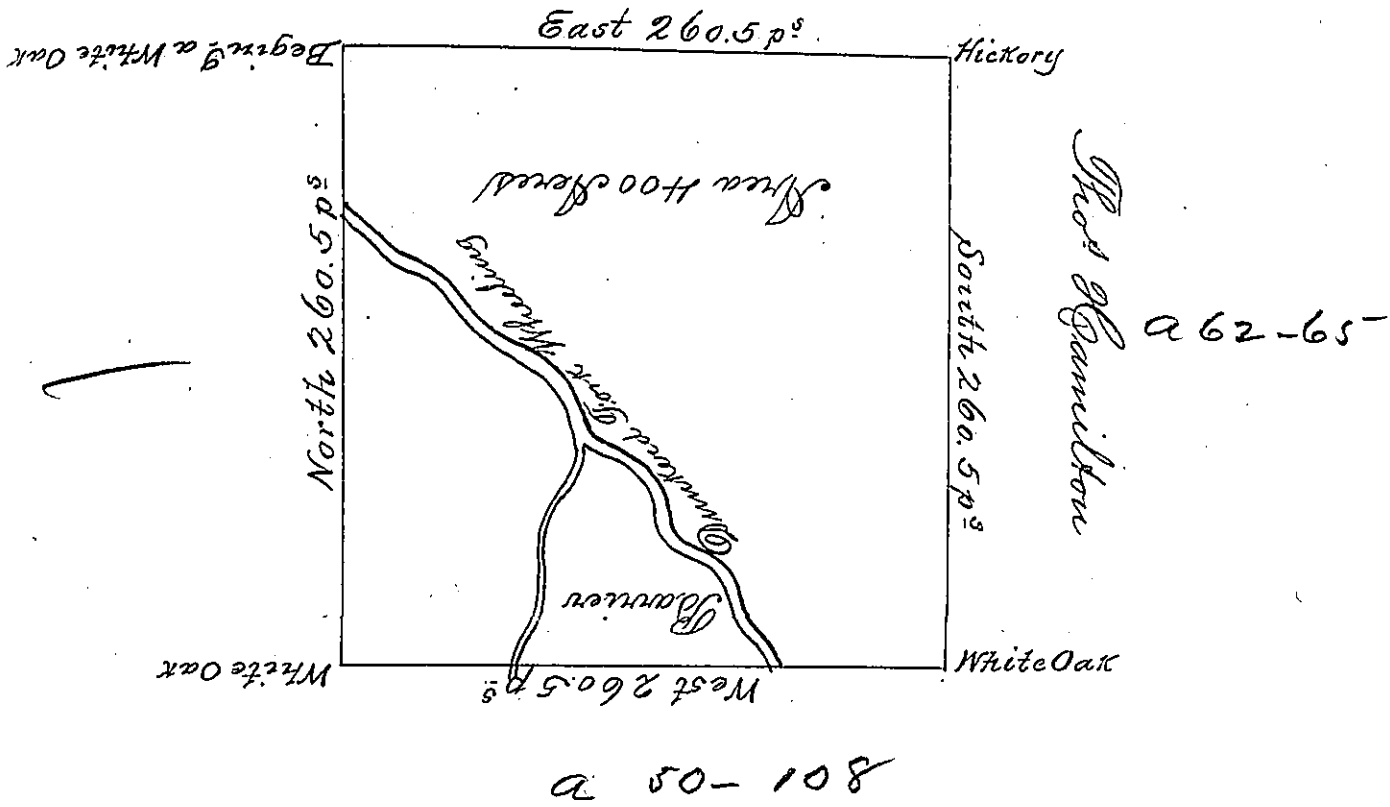


John Jameson
A. 44124



201-05 a

The above is a Draught of a Survey made December 8th 1784 In pursuance of a Warrant Granted to John Cristee Dated the 13th Day of September 1784 Situated on the Waters of Wheeling Creek adjoining Thomas Stobe in Washington County Called Barrier, Containing four hundred Acres with the usual Allowance of six p^{ct} Cent for Roads

John Lukens Esq. S. J. L.

David Redick D. J.

IN TESTIMONY that the above is a copy of the original remaining on file in the Department of Internal Affairs of Pennsylvania, made conformably to an Act of Assembly approved the 16th day of February, 1833, I have hereunto set my Hand and caused the Seal of said Department to be affixed at Harrisburg, this fourth day of November 1902

James W. Latta
Secretary of Internal Affairs.